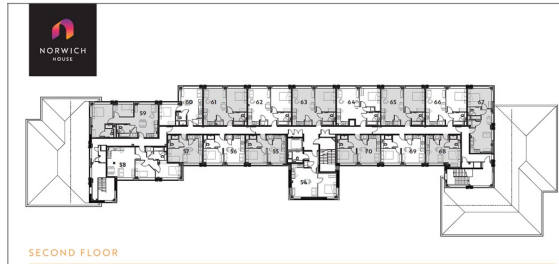




Norwich House | Camberley | Surrey | GU15 3SQ

£1,350 PCM

Waterfords 
Residential Sales & Lettings



Energy Efficiency Rating		
	Current	Potential
Very energy efficient - lower running costs		
(92 plus) A		
(81-91) B		
(69-80) C		
(55-68) D		
(39-54) E	52	52
(21-38) F		
(1-20) G		
Not energy efficient - higher running costs		
England & Wales	EU Directive 2002/91/EC	



Description

A well-presented two-bedroom house located in the popular Norwich House development in Camberley. The property offers bright and comfortable living accommodation, ideal for professionals or a small family. Conveniently situated close to local amenities and transport links. Available to let from March.

Key features

- Two Bedroom Apartment
- High Specification Throughout
- Allocated Underground Parking Available (£30 extra pcm)
- EPC E
- Long Term Rental
- Town Centre Location
- Fully Fitted Kitchen with All Appliances
- Available March on an Unfurnished Basis.
- Council Tax Band C



35 Plough Road
Hampshire
GU46 7UW
01276 903006

surreylettings@waterfords.co.uk
<https://www.waterfords.co.uk/>